

BM69SY

REPLACES: 17.01.18
REVISED: 04.02.19

FITTING INSTRUCTIONS

NP PAJERO 11/02-10/06 BIG TUBE™ PROTECTION BAR TO RETAIN SPOTLIGHT AND HEADLIGHT WASHERS VEHICLE FRONTAL PROTECTION SYSTEM (VFPS) FOR AIR BAG & ADR COMPLIANT VEHICLES

Check installation hardware before commencing.

NOTE: All drilled holes and any exposed metal must be treated with a rust inhibitor.

1. Remove grille. Five clips along top and three push in/out clips. (V6 models – remove plastic air intake cover from passenger side top of grille - three plastic clips).
2. Remove steel protection guard from vehicle tow bracket area.
3. Remove bumper skin. Four plastic clips in lower centre, five plastic clips (each side) and two 10mm head bolts each side (NM), two plastic clips each side (NP) to detach inner guard, one 10mm head self tapper (each side) at top side bumper returns (access under flare), one 10mm head bolt (each side) at top just under indicator (access under guard below indicator), three 10mm head bolts along top centre (where grille removed to access). Do not discard any clips or bolts. They will be useful to secure the inner guard when the protection bar is fitted.

NOTE: Exceed model - disconnect bumper lights from passenger side plug only. Disconnect headlight washer hose as bumper comes off.

4. Remove headlight washers and washer hose along with original spotlight wiring from bumper. Cut original light plugs from wiring as close as possible to plug (one each side – not main centre plug).
5. Remove headlight/indicator assemblies from vehicle. Three 10mm bolts and one 10mm nut (per light). Disconnect wiring. **See figure 1.**
6. Remove washer bottle from drivers' side. Three 10mm head bolts, disconnect wiring and hoses.
7. Splice ECB indicator / park light wiring into original wiring loom.
8. Remove steel inner guard supports from vehicle and discard.
9. Using hole-marking template, mark where rear steel mounting bracket is to be drilled on inside of chassis rail. Line up template with inside top of tow bracket on vehicle chassis and mark hole.
10. Centre punch mark and drill 10mm hole through inside edge of chassis only. Treat exposed steel. **See figure 2.**
11. Using 3/8 x 2 bolt/washer on wire (supplied), bend wire to shape. Insert through lower 25mm access hole in chassis to come out through 10mm hole just drilled. **NOTE:** Access hole may need to be enlarged slightly. Use die grinder or similar.
12. Attach steel mounting bracket to 3/8 x 2 bolt. Align in centre of slot hole on mount. Hold in position with front plate on steel mounting bracket approximately 0-3mm off crash can. **See figures 3 and 4. TIGHTEN NUT FIRM ONLY.**

13. Ensuring top of steel mounting bracket is level, drill 10mm hole entirely through chassis using slot hole in steel mounting bracket as a guide. Drill in centre of slot hole for if any adjustment is necessary.
14. Where 10mm hole has been drilled in outside of chassis, enlarge this hole to 17mm for chassis spacer to fit through. Treat exposed steel. (Use die grinder with steel cutting burr or similar to enlarge hole). **See figure 5.**
15. Insert 40 x 6 round alloy washer plate (supplied) between chassis and steel spacer welded to steel mounting bracket **See figure 6.** Insert 3/8 x 5 1/2 bolt (supplied) from steel mounting bracket side into chassis. Slide chassis spacer tube (supplied) over bolt. **See figure 6a.** Attach 75 x 50 x 6 alloy plate over bolt. Use 3/8 nut/washers (supplied). **TIGHTEN IN POSITION. See figures 3 and 4. TIGHTEN ALL STEEL MOUNTING BRACKET BOLTS/NUTS.**
16. Using 10mm hole in steel mounting bracket as a guide. Drill 10mm hole in lower chassis. Treat exposed metal. Use 3/8 x 1 1/4 bolt and nut (supplied). **See figure 7.**
17. Repeat for other side, ensuring mounts are aligned in same position.
18. Refit original washer bottle, headlight/ indicator assemblies and grille to vehicle.
19. Fit ECB indicator / park lights into protection bar. Use two 10g x 15 stainless steel self-tappers (per light) (supplied) over clamp plate and into front surround. **See figure 8. NOTE: Left and right / park light to outside.**
20. Attach ECB Pajero infill trims (supplied) to protector bar. Use M6 nyloc nuts (supplied). Do not over tighten **FIRM ONLY. See figure 9.**
21. Attach ECB fog lights to protection bar. Place M6 x 20 bolts, spring washers (supplied) through light mount from inside and attach nut to top. Slide assembly into light mount in Protection bar and centralize light to hole. **See figure 10 TIGHTEN FIRM ONLY.** Attach original lighting wiring harness to protection bar using original clips on harness. **See figure 11.** Splice ECB light wiring to original wiring. Use cable locks (supplied). **NOTE: Do not fit ECB light trims to protection bar at this point.**
22. Place headlight washers in protection bar. Place 6mm alloy spacer (supplied) over headlight washer studs. Use clamp plate (supplied) and original nuts to secure under protection bar. **See figure 12.**
NOTE: Left and right washers are different. Ensure right hand washer from bumper goes on right hand side of protection bar to fit over washer bottle.
23. Attach washer hose to washers and washer hose to three protection bar brackets using three zip ties (supplied).
24. Attach protection bar to inside of steel mounting brackets. Insert M14 x 40 bolts (supplied) from inside. Attach M14 nuts/washer on wire (supplied).
NOTE: Connect ECB spotlights, ECB park light / indicators and headlight washers as installing.
25. Position protection bar up in slot holes to where Pajero infill trims just contact vehicle.
NOTE: Ensure nylock nuts that hold trim infills in place are clear of washer bottle on driver's side. Align protection bar and TIGHTEN ALL BOLTS. If necessary loosen 1/4" nylock nuts and align Pajero infill trims with vehicle. Retighten firm only.
26. Either fold plastic inner guard forward or alternately trim the plastic guard with scissors to your taste. Secure with zip ties (supplied). Use the original plastic clips to secure the plastic inner guard.
27. Check operation of all indicator / park lights, ECB spotlights and headlight washers.

28. Reattach steel protection guard to vehicle.
29. Aim ECB fog lamps at low beam height. **TIGHTEN IN POSITION.**
30. Attach ECB spotlight trims (supplied) to protection bar.

ENSURE NUMBER PLATE IS CLEARLY VISABLE

Note: When fitting/refitting the licence plate to the vehicle, ensure there is no obstruction to licence plate vision in accordance with local authorities. If required relocate licence plate to an alternate location.

Further VFPS Notes:

- a) Do not attach VFPS to the vehicle using anchorages not intended for this purpose (e.g. engine mounting bolts).
- b) Do not use this product for any vehicle make or model, other than those specified by the VFPS manufacturer.
- c) Do not remove the plaque or label from the VFPS.
- d) Do not modify the structure of the VFPS in any way.
- e) No accessory or fitment should project forward of the VFPS forward profile.
- f) **ENSURE THESE INSTRUCTIONS ARE LEFT WITH VEHICLE OWNER AND/OR OPERATOR.**

IMPORTANT INFORMATION

Periodically check bolts and nuts for correct tightness, especially if travelling on rough roads

FITTING KIT

1 – Pair Steel mounting brackets.	4 – 14mm flat washers.
2 – 40 x 6 round alloy washer plates.	4 – 14mm spring washers.
2 – 75 x 50 x 6 alloy plates (ATM61_6AL).	7 – 200mm long zip ties.
2 – 78mm long 10 NB chassis tube spacers.	1 – Pair ECB Pajero infill trims (ICNMINFL)
2 – 3/8 x 2 bolt/washers on 300mm wire.	2 – ECB fog lights (ICLED200DRL)
2 – 3/8 nuts.	2 – ECB fog light trims
2 – 3/8 x 5 ½ bolts/nuts.	2 – M6 x 20 bolts.
2 – 3/8 x 1 ¼ bolts/nuts.	2 – M6 nuts
10 – 3/8 flat washers.	2 – M6 flat washers.
6 – 3/8 spring washers.	2 – M6 spring washers.
2 – 6mm alloy headlight washer spacers.	6 – 1/4 nyloc nuts.
2 – 3mm alloy headlight washer clamp plates.	6 – M6 flat washers.
4 – M14 x 40 x 1.5 bolts.	1 – ECB LED Indicator / Park light kit (ICLED104ECB)
4 – M14 nuts with washers and 450mm wire	10 – Cable locks.



Figure 1



Figure 2



Figure 3

75 x 50 x 6 alloy plate over 3/8 x 5 1/2 bolt



Figure 4 0-3mm clearance here.



Figure 5 – Enlarging outer chassis hole to 17mm for chassis spacer.

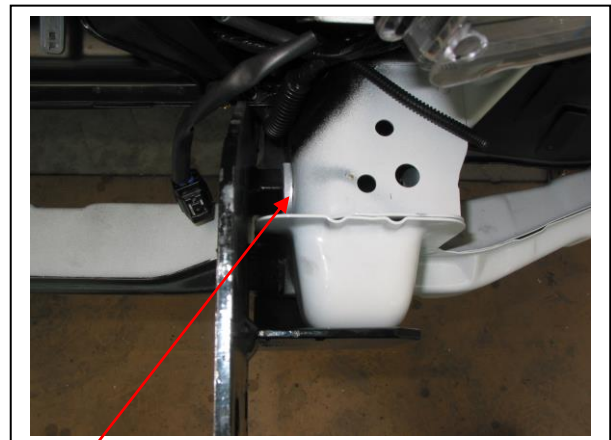
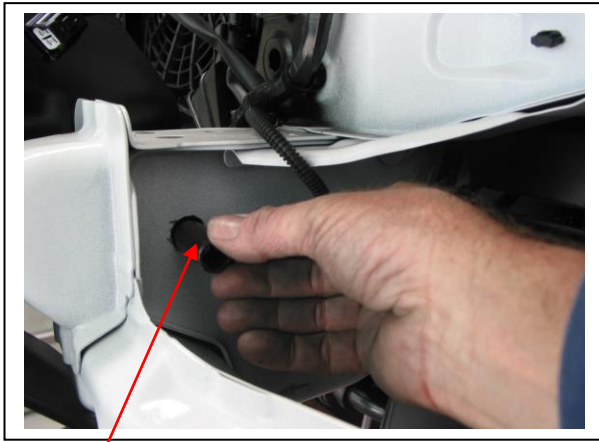


Figure 6
6mm alloy
chassis spacer



Spacer tube

Figure 6a

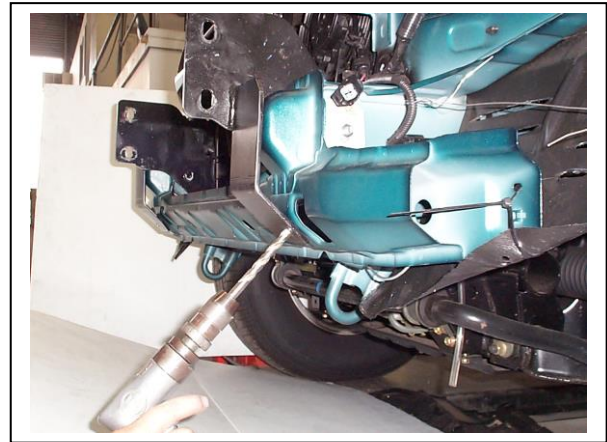
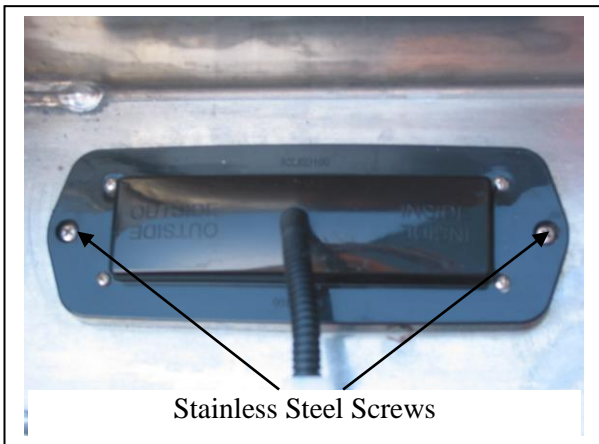


Figure 7



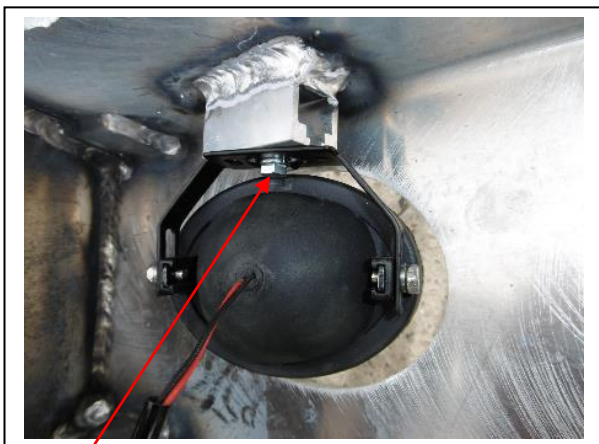
Stainless Steel Screws

Figure 8



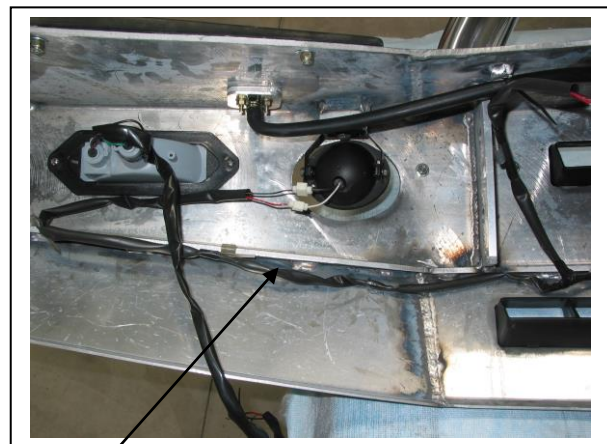
Figure 9

Attach ECB Pajero
infill trim



M6 bolt

Figure 10.



Clip harness
along here

Figure 11

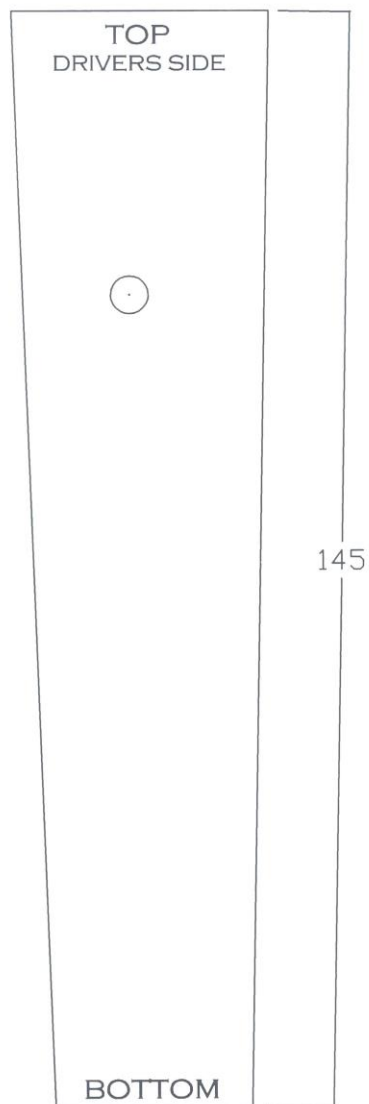


Figure 12

Headlight washer
6mm spacer plate &
3mm clamp plate

HOLE MARKING TEMPLATE

Cut out and line up
top with top of tow
bracket.





**Lighter
Stronger
Better!**

A: 29 Snook St Clontarf QLD 4019
A: PO Box 122 Margate QLD 4019
P: 07 3897 5700
F: 07 3283 1168
E: info@ecb.com.au
W: ecb.com.au
W: customalloy.com.au





**Lighter
Stronger
Better!**

A: 29 Snook St Clontarf QLD 4019
A: PO Box 122 Margate QLD 4019
P: 07 3897 5700
F: 07 3283 1168
E: info@ecb.com.au
W: ecb.com.au
W: customalloy.com.au



DESPATCH CHECKLIST BM69SY

Work Order #		See other side of this page for photos of all mounts
Finish:		
Transport:		
Due Date:		

- OC.....1 – Pair steel mounting brackets
- OC.....1 – Bolt Kit
- OC.....2 – ECB Overriders
- OC.....1 – Pair ECB Pajero infill trims
- OC.....2 – 6mm air scoops
- OC.....3 – 3mm air scoops
- WR.....1 – Pair Steel mounting brackets – **Fitted to bar**
- WR.....1 – Bolt kit – **Taped inside wing**
- WR.....1 – Pair ECB Pajero infills (ICNMINFL) – **Wrapped & Taped with fitting kit**
- WR.....2 – ECB Overriders - **Fitted to bar**
- WR.....2 – 6mm air scoops – **Fitted in bar**
- WR.....3 – 3mm air scoops – **Fitted in bar**



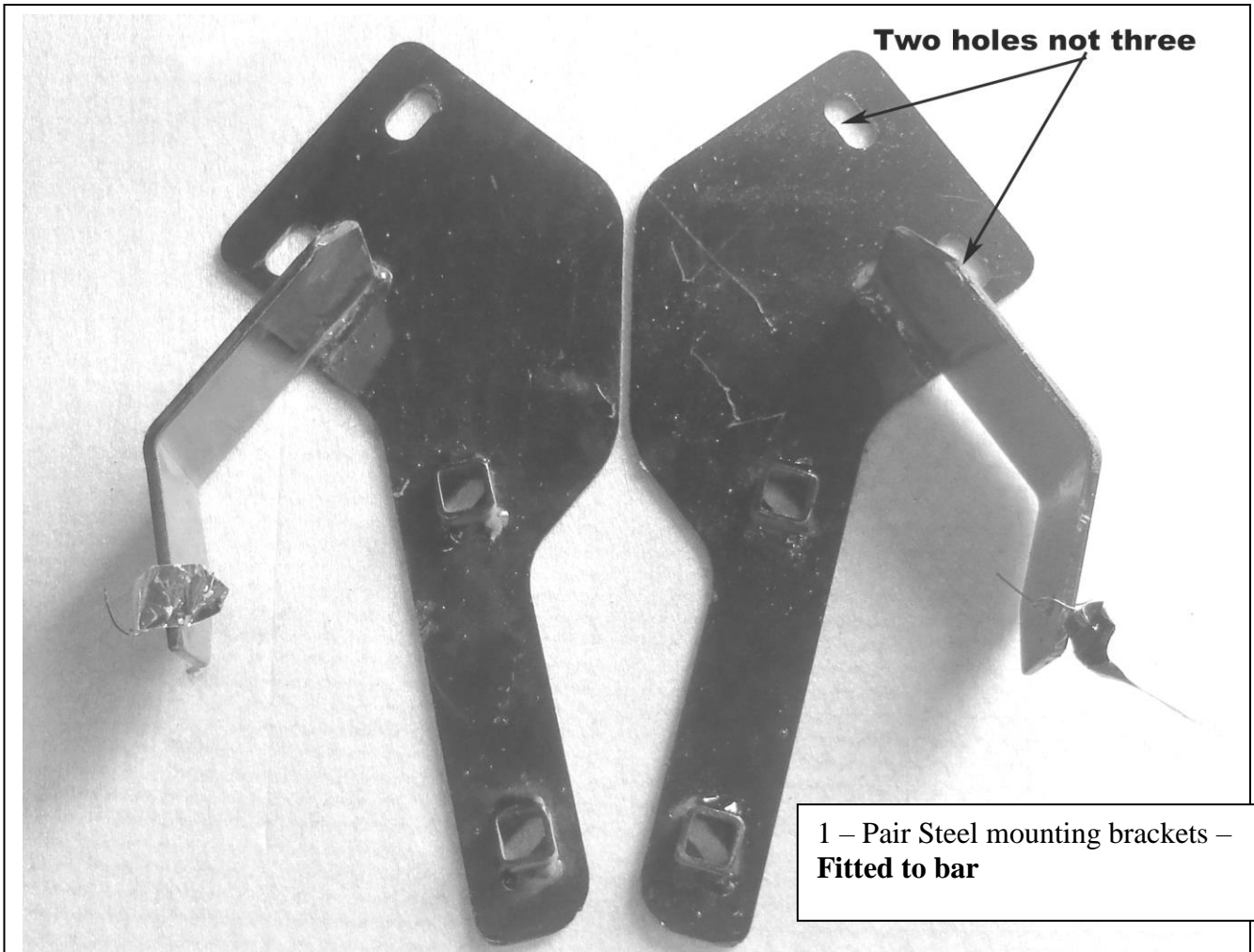
Is this product “the best it can be” Yes _____ / _____
Wrapper's initials / Checker initials
 If **NO** fix before continuing

All parts checked and completed by:

Nut and bolts: _____ Date __/__/__

Order control: _____ Date __/__/__

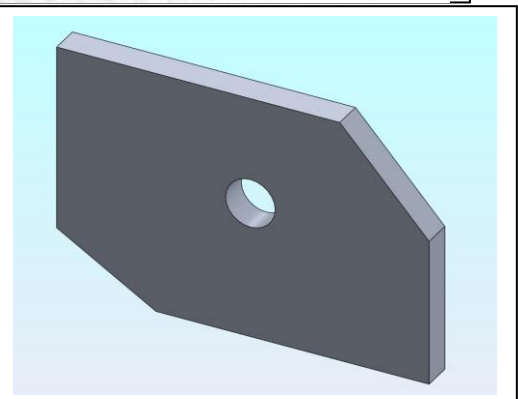
Final wrap check: _____ Date __/__/__



1 – Pair Steel mounting brackets –
Fitted to bar



Pajero Infill trims – **Wrapped & Taped with fitting kit**



75 x 50 x 6mm Alloy plate
(ATM61_6AL) – **In bolt kit**